

# RESIDENCE INN BY MARRIOTT DENVER DOWNTOWN

Our newly renovated spacious suites have all the amenities you expect from an upscale hotel and a terrific location. Suites feature completely equipped **gourmet kitchens**, living area with large HD LCD TV, in-room coffee makers, full size desk and most have wood burning fireplaces. All the space you need to unwind, relax and recharge. Great for extended stays, entertaining and for those that enjoy more of a residence than a hotel.



### Hotel Information

- 159 rooms ( Studio & 2 story suites)
- On-Site Laundry Facility
- On-site Boardroom for up to 10 guests
- Nearby events center for up to 350 guests

### Complimentary Amenities

- Social Hour with Food, Beer & Wine (M-W)
- Full Hot Breakfast Buffet offered daily
- Local Area Shuttle Service
- High Speed Wi-Fi access
- Self-Parking
- Grocery Shopping Service
- 24 hr. Business Center; PC, Copies, Faxing

### Recreational Facilities

- Outdoor Heated Pool
- On Site Fitness Center



*Outdoor Heated Pool*



*Penthouse Executive Suite*



*Studio Suite*

### Location

- Walking distance to Downtown Denver
- 5 minutes to Colorado Convention Center
- Highlands neighborhood known for upscale townhomes, unique eateries, bars and shops.
- Nearby to Elitch Gardens, Sports Authority Field, Pepsi Center, Coors Field, 16<sup>th</sup> St. Mall, Aquarium, Center for Performing Arts, etc.

### Transportation

- Discounted airport transfers – Towncars/SUV's
- Free local area shuttle



2777 Zuni St.  
Denver, CO 80211  
Telephone: (303) 458-5318  
Reservations: 800-331-3131  
[www.Marriott.Com/DENTW](http://www.Marriott.Com/DENTW)



## Suite Descriptions

**Studio Suites:** These suites are 550 sq. ft. and feature:

- Living room area with a large well lit desk and ergonomic chair, 38" HD TV with premium cable channels, pull-out sleeper sofa and most have wood burning fireplaces. Each suite has a full gourmet kitchen; stone tile, granite countertop, full size stainless steel appliances include a refrigerator/freezer with ice maker, microwave, coffee maker, dishwasher, oven/4 burner range, all cookware, utensils, glasses, etc. Queen size bed with Marriott premier linens, large master bathroom with separate vanity.



Sleeps up to 3 guests

**Penthouse Suites:** These bi-level suites are 850 sq. ft. and feature:

- Living room area with large well lit desk and ergonomic chair, 38" HD TV with premium cable channels, pull-out sleeper sofa and have a wood burning fireplace. Each suite has a full gourmet kitchen; stone tile, granite countertop, full size stainless steel appliances include a refrigerator/freezer with ice maker, microwave, coffee maker, dishwasher, oven/4 burner range, all cookware, utensils, glasses, etc. On the main level you have a dining room table for 4 guests. You also have Murphy style Queen Size Bed with Marriott premier linens, large master bathroom. Upstairs you have a loft area with a Queen Size bed, a 32" HD TV, master bathroom with separate vanity area.



Sleeps up to 5 guests

**Penthouse Executive Suites:** These 1 bedroom + loft suites are 850 sq. ft. and feature:

- Living room area with large well lit desk and ergonomic chair, 38" HD TV with premium cable channels, pull-out sleeper sofa and have a wood burning fireplace. Each suite has a full gourmet kitchen; stone tile, granite countertop, full size stainless steel appliances include a refrigerator/freezer with ice maker, microwave, coffee maker, dishwasher, oven/4 burner range, all cookware, utensils, glasses, etc. On the main level you have a Queen Bed with Marriott premier linens, large master bathroom. Upstairs you have a 2<sup>nd</sup> master bedroom with a Queen Size bed and a 32" HD TV, 2nd large master bathroom with separate vanity area.



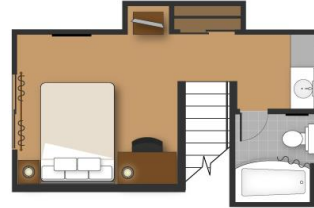
Sleeps up to 5 guests



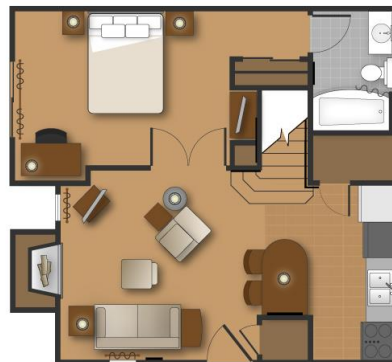
Suite Floor Plans



**Studio Suite: 550 sq. ft.**



**Penthouse Suite: bi-level loft, 850 sq. ft.**



**Penthouse Executive Suite: 1 Bedroom + Loft, 850 sq. ft.**